

FOCALPOINT® GRAPHIC WORKSTATION

IP-Based Graphic User Interface

The FocalPoint® Graphic Workstation is a gateway interface used to connect to the E3 Series® and S3 Series fire alarm control panels.

The Gamewell-FCI, FocalPoint® Graphic Workstation is an IP-based graphic user interface that connects to the 7100, E3 Series® or S3 Series of fire alarm control panels via the Gateway interface. It can be connected to a proprietary or shared TCP/IP network. The FocalPoint Workstation is a high-performance industrial computer that provides text and color graphic display of fire alarm control panel network events and locations. This central command station displays systems' activities in real-time. One workstation has the capacity of simultaneously monitoring multiple FocalPoint Gateways that can be connected to the following systems:

- E3 Series Networks
- 7100 Series Standalone
- S3 Series Standalone
- S3 Series Networks

The FocalPoint Graphic Workstation supports a broad scope of commercial, industrial and institutional applications. The system can be configured to monitor multiple systems installed in remote locations to meet the facility requirements of multi-building complexes.

FEATURES AND BENEFITS

- Listed under UL® Standard 864, 10th Edition
- Includes a flexible remote control
- Equipped with improved System Maintenance
 - Reports and logs trouble events
- Offers Backup capability
- Stores system backups for screen, user, or history databases
- Using the workstation with the following systems, the Acknowledge, Reset, and Silence fire alarm functions can be activated via remote control:
 - E3 Series
 - S3 Series
 - 7100 Series Standalone
- Provides user-friendly system setup to import facility floor plans in any of the following formats:
 - CAD Drawing exchange Format files
 - Windows® graphic bitmaps
 - Windows® graphic meta files
- Has Secure Access
 - Security profiles provide multiple levels of access to different user types
- Presents Automatic Screen Navigation
 - (selectable for each device) that locate and zooms to the device related to an alarm or event, based on the priority of the event
- Identify Hazardous Material (HAZMAT) and handicapped accessible areas using fully linked multimedia
- Adjustable Configurable Windows
 - Provide flexibility to display information as desired
- Supports dual monitor displays to view graphics and text simultaneously
- Remote Notification
 - Email and text notification of all off-normal events

The Workstation is used as a decision support tool by facilities management and security personnel. This workstation uses graphic images to display information that allows personnel to quickly evaluate the emergency and make prompt and informed decisions. From a single screen, a workstation operator can do the following:

- Magnify the facility map using the "zoom in" and "zoom out" feature to view floor plans or identify the location and type of multiple events.
- Monitor remote site activity and link multimedia (text, audio, video, and bitmaps) to any device.
- View the event history log on the same screen as the facility floor plans to evaluate the sequence of events.
- Print reports of system-wide events in real-time.
- Display History Manager records for operator, event, and response (with time and date stamp to disk).



- Displays information labels

GENERAL

Use this graphic workstation to evaluate complex situations and quickly make strategic decisions when monitoring the fire alarm control system. During an emergency, where information must be evaluated in seconds, using a small, LCD screen to navigate a fire alarm control panel is arduous and time-consuming. The Workstation greatly simplifies the management of medium to large size fire alarm control systems. Operators can use this workstation to view the status of multiple fire alarm systems and track system events in real-time from a central location.

FOCALPOINT WORKSTATION

The following lists the FocalPoint Workstation features.

- Rack-Mountable Intel® i7-4700EQ, 2.4GHz, QM87,4th Gen, (four cores/8 threads)
- 6 MB Cache
- 16 MB of system RAM
- 240 GB Solid-State Hard Drive
- Microsoft Windows 10 Enterprise 64 Bit
- Monitor Options:
 - 22" standard
 - 42" standard
 - 22" touchscreen
 - 42" touchscreen
- USB optical mouse and keyboard
- UL 864 10th Edition Listed (Fire)

Graphics:

The graphics' features are listed below.

- Graphic editing mode allows on-site programming of floor plan screens, device icons, functional and navigational buttons.
- Imports the following types of converted vector drawing files from CAD floor plan drawings.
 - .WMF
 - .GIF
 - .BMP
 - .DXF
 - .JPG
- Print graphics of floor plans and reports.
- Custom-designed, device icon colors that represent each event type.

Minimum System Requirements:

The following list the minimum system requirements.

- Intel i5 Processor or higher
- Windows 10 64-bit Enterprise
- 4 GB RAM
- 40 GB Hard Drive
- Regular or Touchscreen LCD Monitor, Minimum resolution of 1280x1024 Landscape Mode
- Auxiliary Ports:
 - One RS-232 Port and Serial cable for event printer operation
 - One Parallel printer port for graphics printing
- Microsoft® compatible mouse
- 104-key keyboard
- USB Connector
- TCP/IP Ethernet Network Adapter Card
- Speakers

NETWORK

The FocalPoint Graphic Workstation uses the Ethernet network. Figure 1 illustrates the FocalPoint 42 inch monitor display.

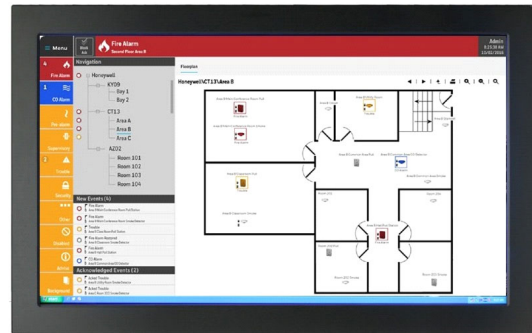


Figure 1 - FocalPoint 42 Inch Monitor

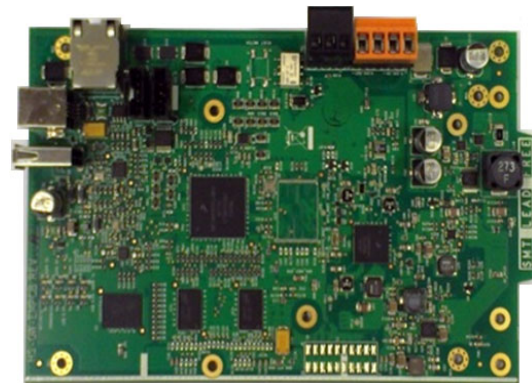


Figure 2 - FocalPoint Gateway

FOCALPOINT GATEWAY

The FocalPoint Gateway is a powerful interface that provides the capacity to monitor multiple networks installed in remote locations. The gateway interfaces with the following standalone and network product lines via the panel's RS-232 port and Ethernet ports.

- E3 Series (Ethernet only)
- S3 Series (Ethernet only)

In addition, the gateway can be used to connect to the FocalPoint Graphic Workstation via a standard Ethernet TCP/IP networking.

ANX

The Addressable Node Expander (ANX) is a network interface board that is used to connect the FocalPoint Graphic Workstation and the E3 Series fire alarm control panels through the Ethernet. The ANX interface can use voice communication with text and graphics to transmit information in real-time to other systems in the network.

For additional information on the ANX, refer to Data Sheet Part Number: 9021-60497.

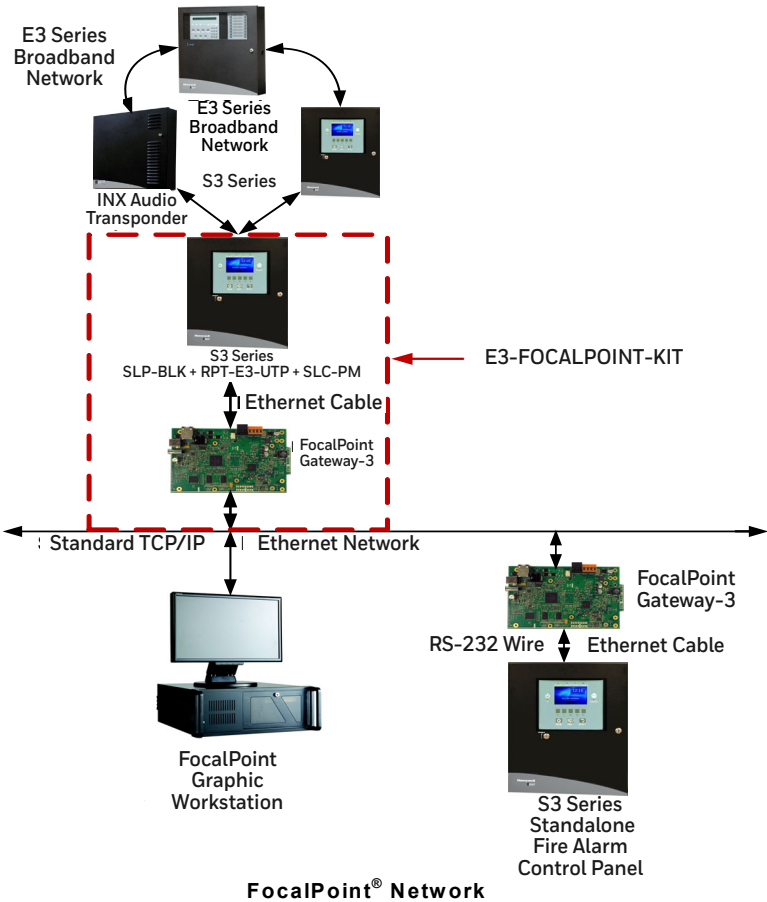
Figure 3 illustrates the adaptable, flexibility of the Focal-Point Gateway to connect to any of the following types of network installation options:

- Option 1: E3/S3 Series network
- Option 2: S3 Series standalone

PANEL	ACKNOWLEDGE	SILENCE	RESET	ENABLE/DISABLE	VIRTUAL ASM KEYS	COMMENTS
E3 Series Network	Yes	Yes	Yes	Yes	Yes	Enable/Disable requires ILI/ILI95-E3 Series 1.7 Firmware or greater. ANX required for FPT 3.14 or greater.
S3 Series Standalone	Yes	Yes	Yes	Yes	Yes	
S3 Series Network	Yes	Yes	Yes	Yes	Yes	
7100 Series Network	No	No	No	No	No	Monitor Only

Table 1: Focal-Point Gateway Control Capabilities

Figure 3 illustrates the FocalPoint Gateway installation options.



FocalPoint® Network
Figure 3 - FocalPoint Gateway Installation Options

Figure 4 illustrates the ANX integration with the FocalPoint using the Ethernet.

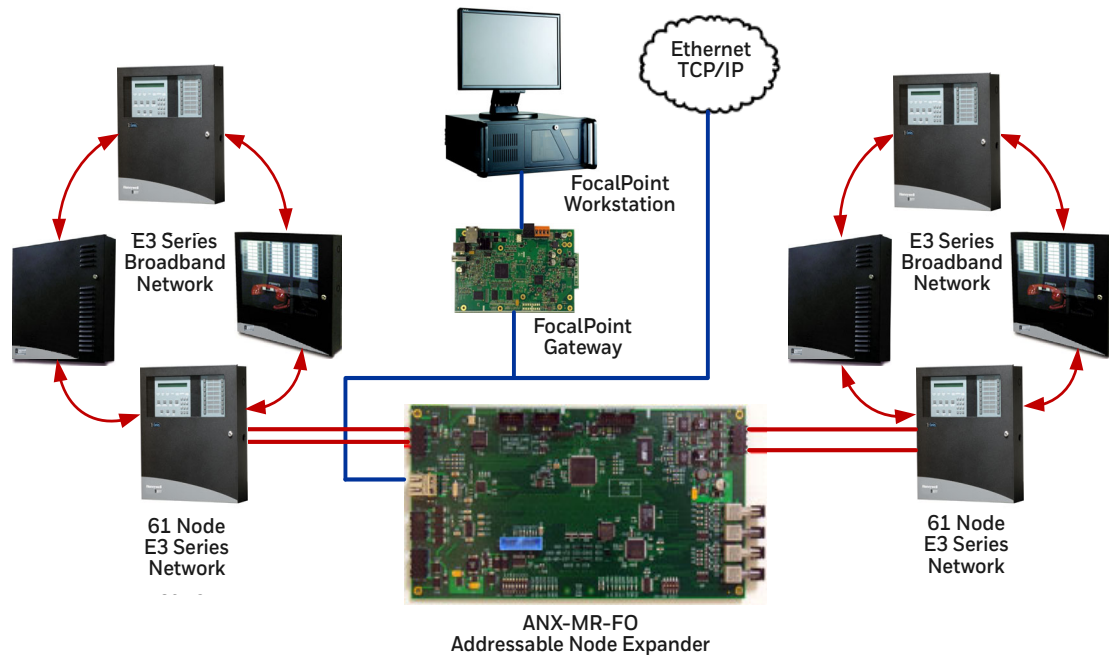


Figure 4 - FocalPoint Workstation with ANX-MR in a Multi-Ring Network Configuration

BUILDING SYSTEM INTEGRATION

The FocalPoint Proprietary Supervising Station Software Add-on allows the assimilation with other competitive fire alarm control panels (as well as the Gamewell-FCI fire-only applications) to be integrated into a single graphical user interface. This Software Add-on allows the System to monitor information transmitted from local or remote building systems (for example, fire or security panels) over the shared IP or

the standard phone lines using the Digital Alarm Communicator Receiver (DACR). The flexible FocalPoint System can be interfaced to monitor events received by the following devices.

- Bosch® D6600 Central Station Receiver
- Teldat® VisorALARM® Central Station Receiver (contact ID format only) by using the Receivers Gateway (FPT-GATE-DACR)

Figure 5 shows the Building System Integration monitoring configuration.

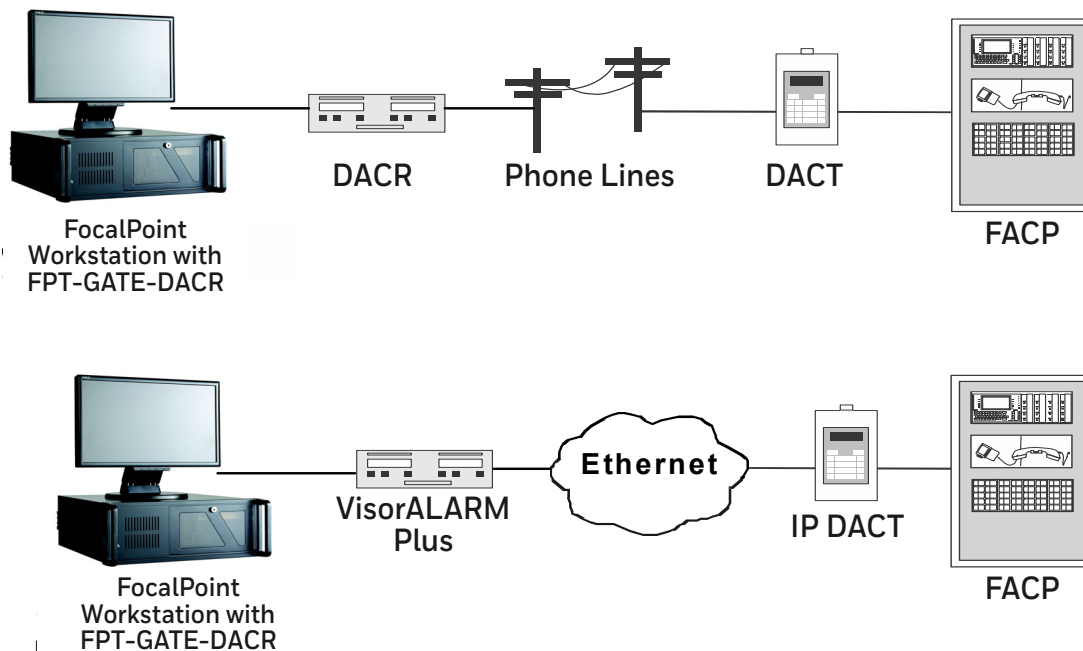


Figure 5 - Building System Integration-Monitoring Configuration

The FocalPoint Graphic Workstation provides the following types of graphic displays. Figures 6 and 7 illustrate the screens.

- [illegible]

[illegible]

9020-0647:Q • 10/12/2020 Page 5 of 6

FOCALPOINT® GRAPHIC WORKSTATION TECHNICAL SPECIFICATIONS

environment with a normal room temperature of 15 – 27°C/60 – 80°F.

SYSTEM

CPU:

Dimensions: 19" W x 7" H x 17.7" D
(48.3 x 17.8 x 45 cm)

Weight: 39 lbs. (17.7 kg)

CPU Electrical:

AC Input (frequency 50/60 Hz)

7.0 A @ 115 V (95-132 V)

4.0 @ 230 V (185-264 V)

22" Monitor:

22" (55.88 cm) flat-screen LCD color monitor

Dimensions: 20.2" W x 15.9" H x 8.7" D
(51 x 40 x 22 cm)

Weight: 15.3 lbs. (7 kg)

22" Monitor:

AC Input
Electrical: (frequency 50/60 Hz auto-adjust)
1.8 A @ 120 - 240 VAC.

Power consumption: 43 watts (maximum)

42" Monitor:

42" (106.6 cm) flat screen LCD color monitor

Dimensions: 41.3" W x 25.2" H x 5.0" D
(104.9 W x 64 H x 12.7 D cm)

Weight: 70 lbs. (31.7 kg)

42" Monitor: AC input 1.7 A @ 90-2040 AC

Electrical:

Power Consumption 235 Watts (max.)

Gateway Cabinet:

13.25" W x 10" H x 3" D

Dimensions: (33.6 W x 25 H x 3.6 D cm)

Gateway Electrical:

24 VDC input 450 mA @ +24 VDC

FPT-WKS-WS:

Max Current (Amps): 7.0

Power: 120 VAC, 60 Hz

Compatible Monitors:

MON-22-LCDW:

Max Current (Amps): 1.97

MON-22-LCDW-TS:

Max Current (Amps): 1.97

MON-42-LCDW:

Max Current (Amps): 1.2

TEMPERATURE AND HUMIDITY RANGES

This system meets NFPA requirements for operation at 0 – 49°C/32 – 120°F and at a relative humidity 93% ± 2% RH (non-condensing) at 32°C ± 2°C (90°F ± 3°F). However, the useful life of the system's standby batteries and the electronic components may be adversely affected by extreme temperature ranges and humidity. Therefore, it is recommended that this system and its peripherals be installed in an

STANDARDS

The FocalPoint Graphic Workstation is designed to comply with the following standard:

UL Standard: UL 864, 10th Edition

AGENCY LISTINGS AND APPROVALS

These listings and approvals apply to the modules specified in this document. In some cases, certain modules or applications may not be listed by certain approval agencies, or listing may be in process. Consult the factory for the latest listing status.

UL Listed: S5526, S5697

UL 864, 10 Edition

FDNY: COA 6149

CSFM: 7300-1703:0168

E3 Series®, FocalPoint®, and Gamewell-FCI® are registered trademarks of Honeywell International, Inc.

Bosch® is a registered trademark of Bosch Security Systems, Inc.

Intel® is a registered trademark of the Intel Corporation.

Teldat® and VisorALARM® are registered trademarks of the Teldat corporation.

UL® is a registered trademark of Underwriters Laboratories.

This document is not intended to be used for installation purposes. We try to keep our product information up-to-date and accurate. We cannot cover all specific applications or anticipate all requirements. All specifications are subject to change without notice.

Country of origin: U.S.A.

Honeywell Gamewell-FCI

12 Clintonville Road

Northford, CT 06472-1610

203.484.7161

www.gamewell-fci.com

9020-0647 | Q | 10/20

©2020 Honeywell International Inc.

